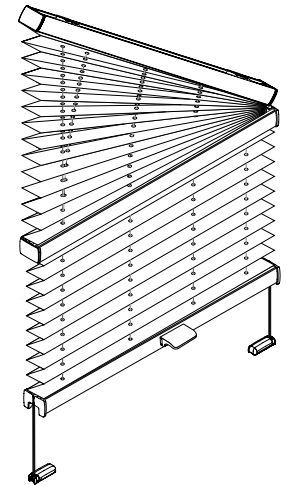


VS4 Slope

Montage- und Bedienanleitung

*Assembly and operating instructions
Notice de montage et mode d'emploi*



02 / 2021

technische Änderungen bleiben
vorbehalten

*subject to technical change
sous réserve de modifications techniques*



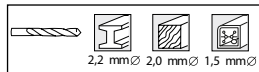
04046046444541

A Montage

Fixation – Montage

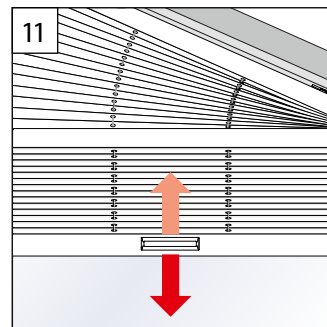
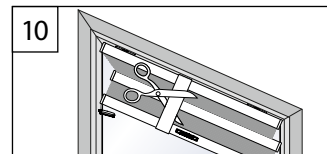
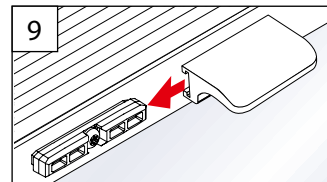
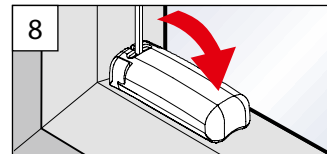
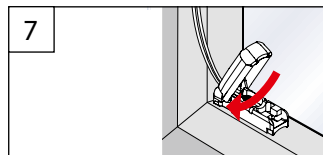
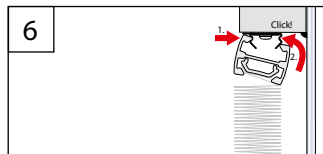
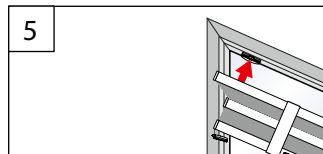
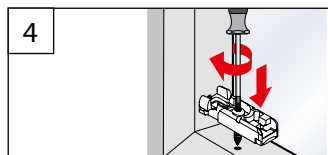
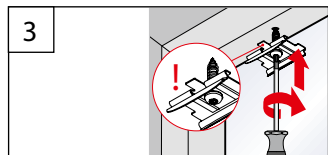
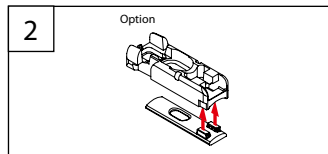
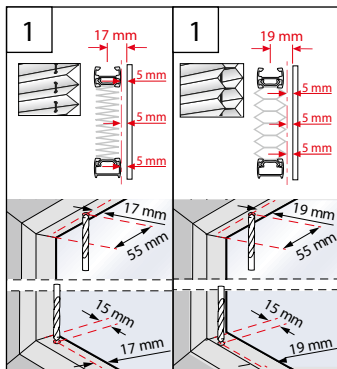
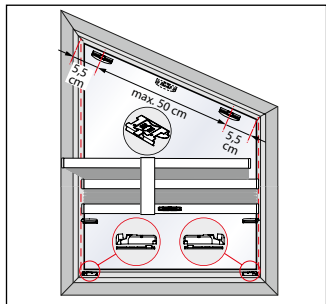
→ **Bitte nur beiliegende Schrauben verwenden!**

Please use only the enclosed screws! - Veuillez utiliser seulement les vis jointes!



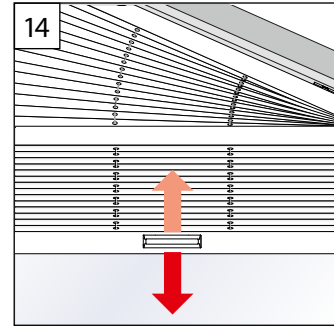
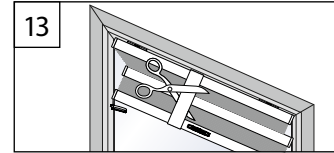
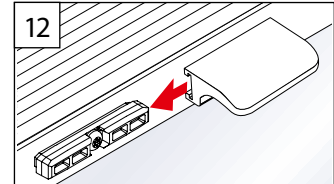
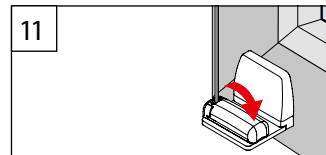
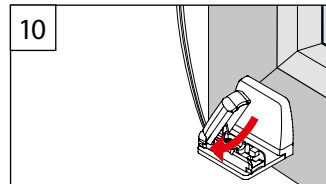
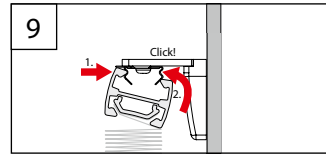
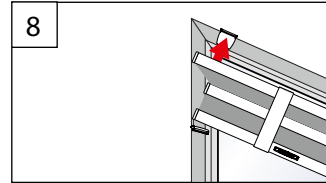
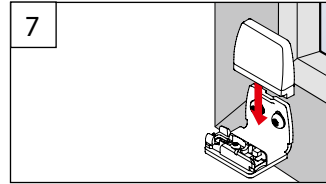
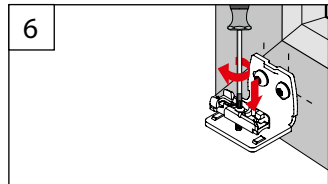
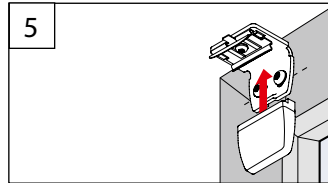
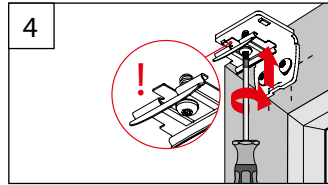
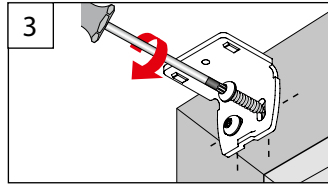
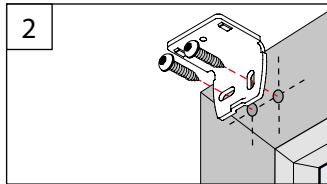
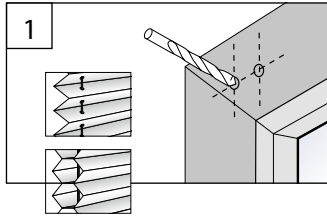
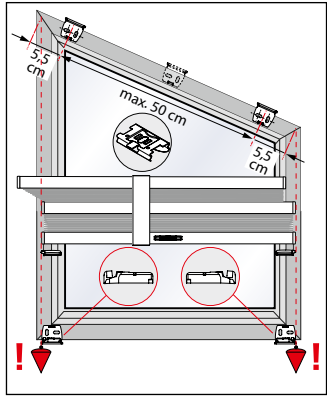
FALZMONTAGE

TOP FIXING – DANS LA RAINURE



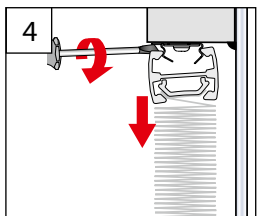
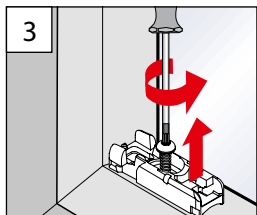
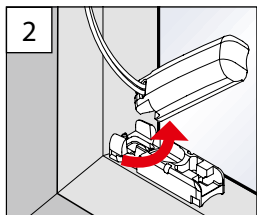
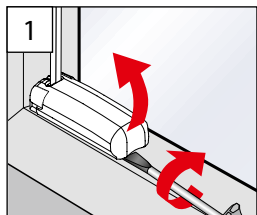
DECKENCLIP / WANDWINKEL

CEILING CLIP / WALL FIXING BRACKET - CLIP PLAFOND / SUPPORT MURAL



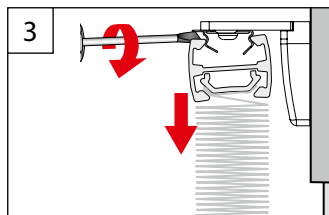
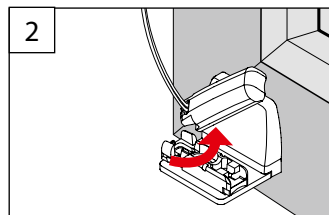
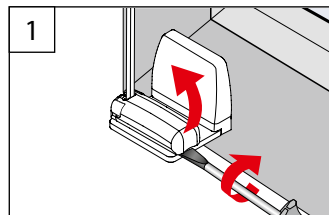
B Demontage

Dismantling - Démontage



DECKENCLIP

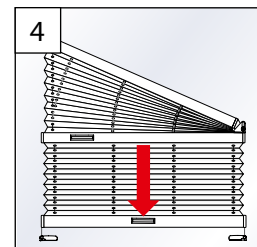
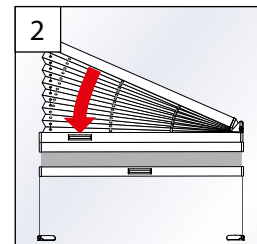
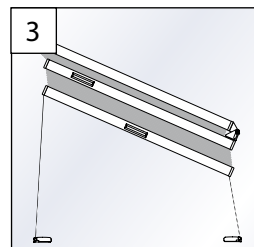
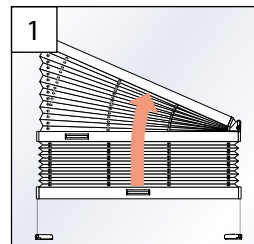
CEILING CLIP - CLIP PLAFOND



5

C Bedienung VS 4 Slope 2

Operation - Manipulation



6